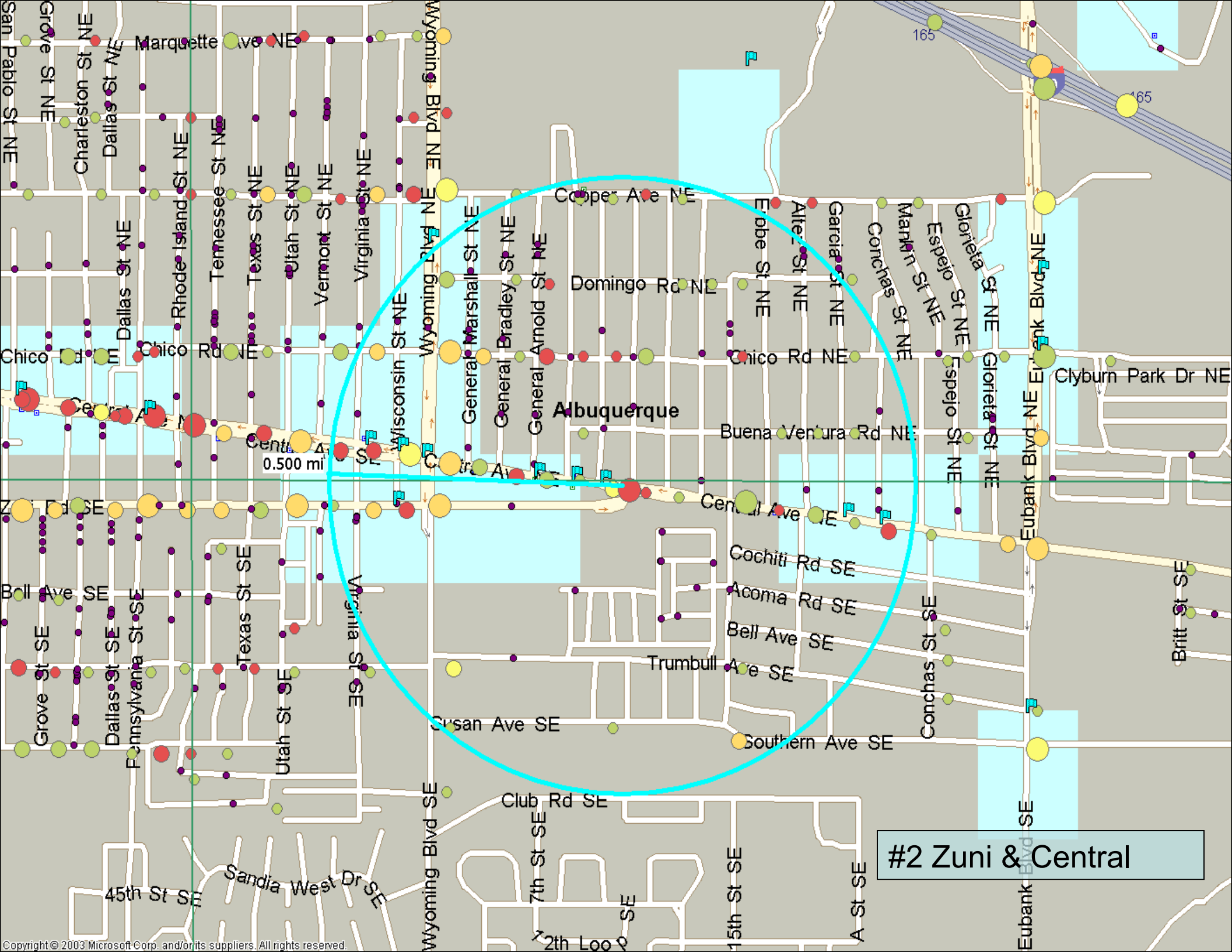
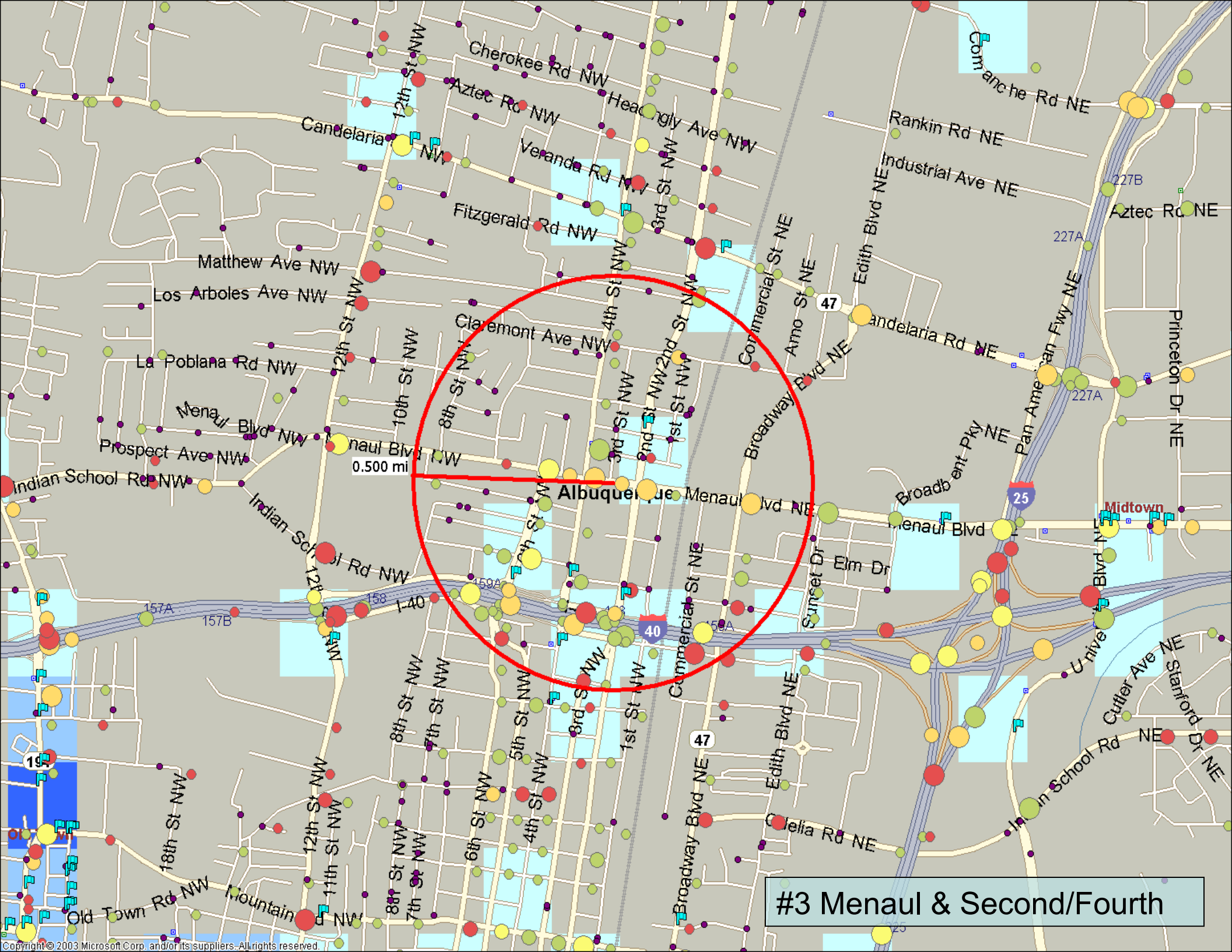


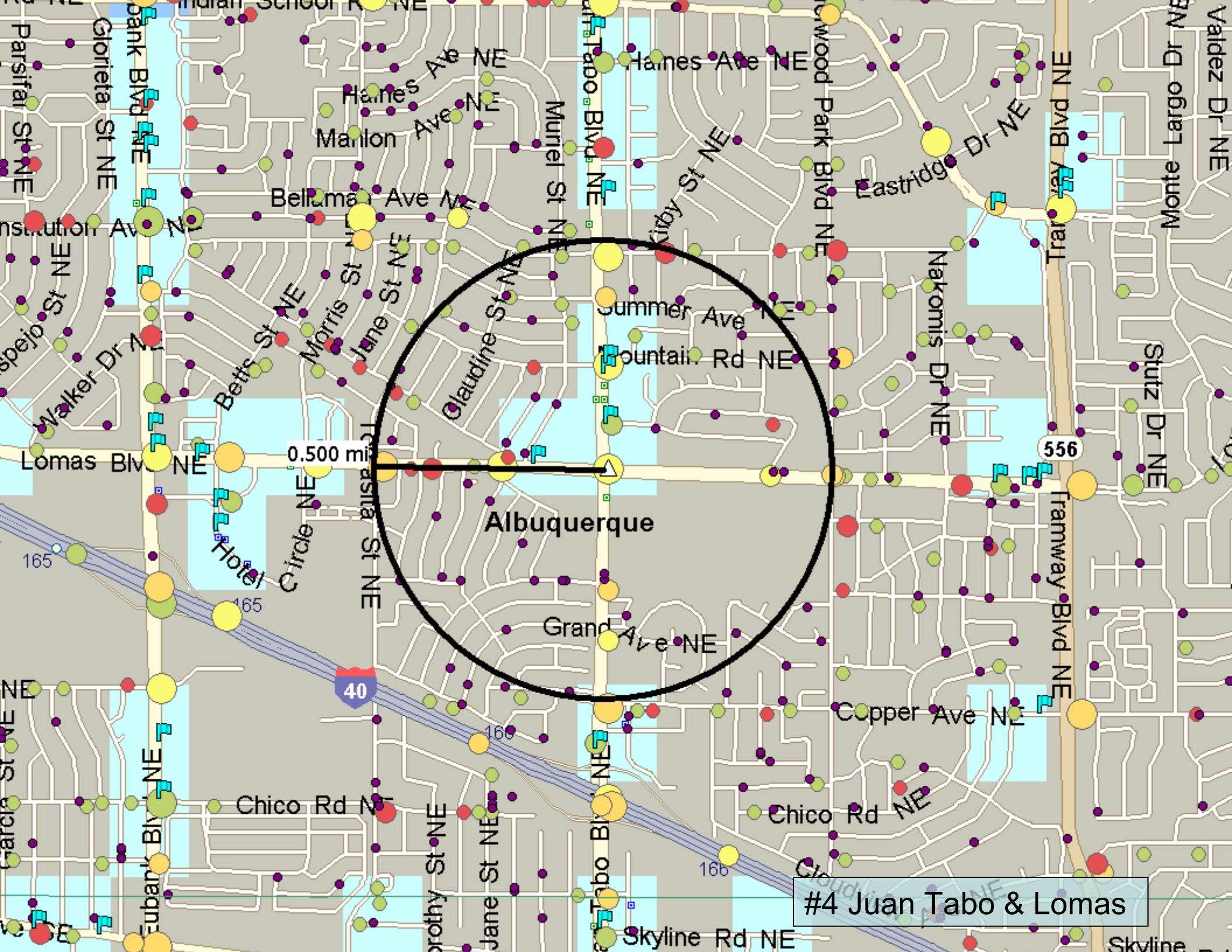
#1 Louisiana & Central



#2 Zuni & Central



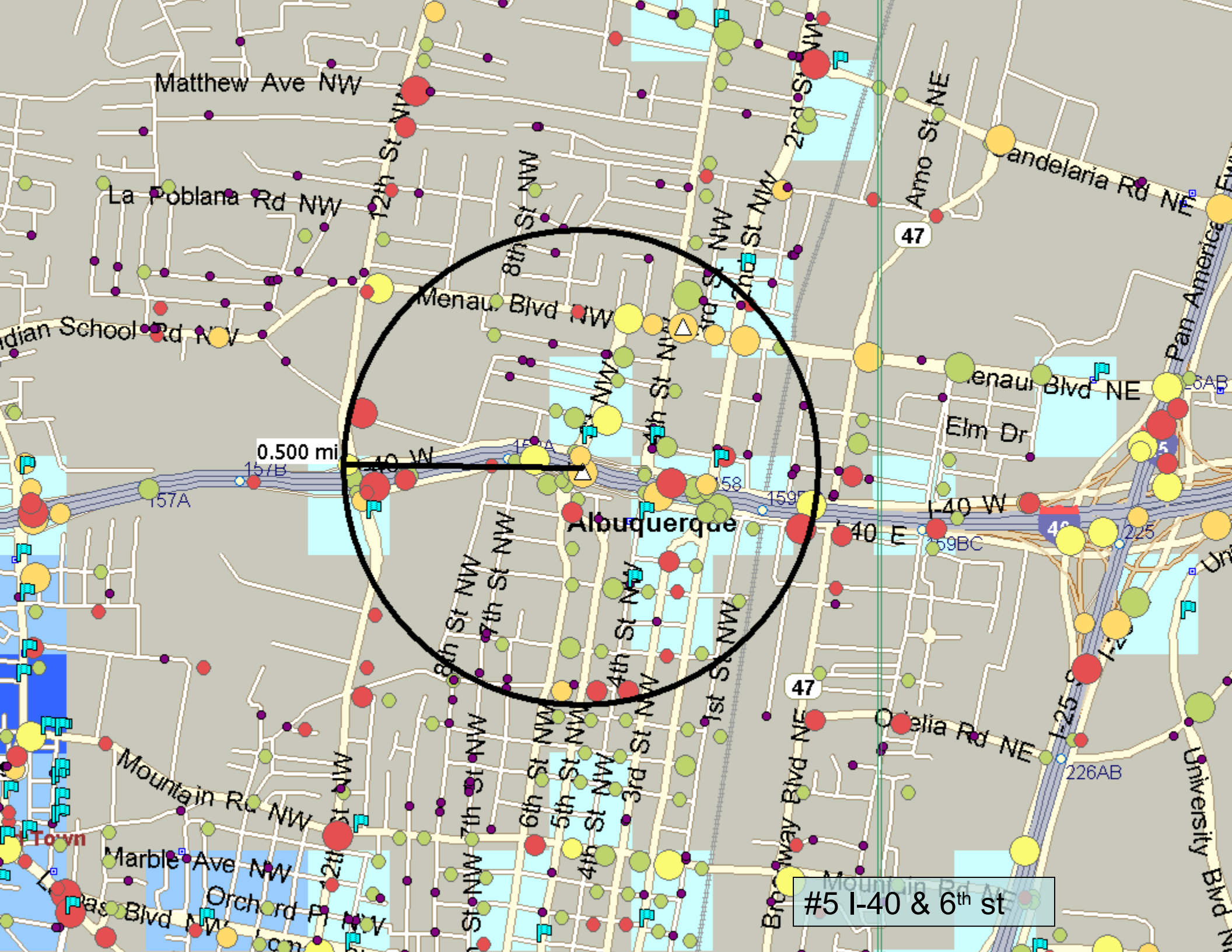
#3 Menaul & Second/Fourth



0.500 mi

Albuquerque

#4 Juan Tabo & Lomas

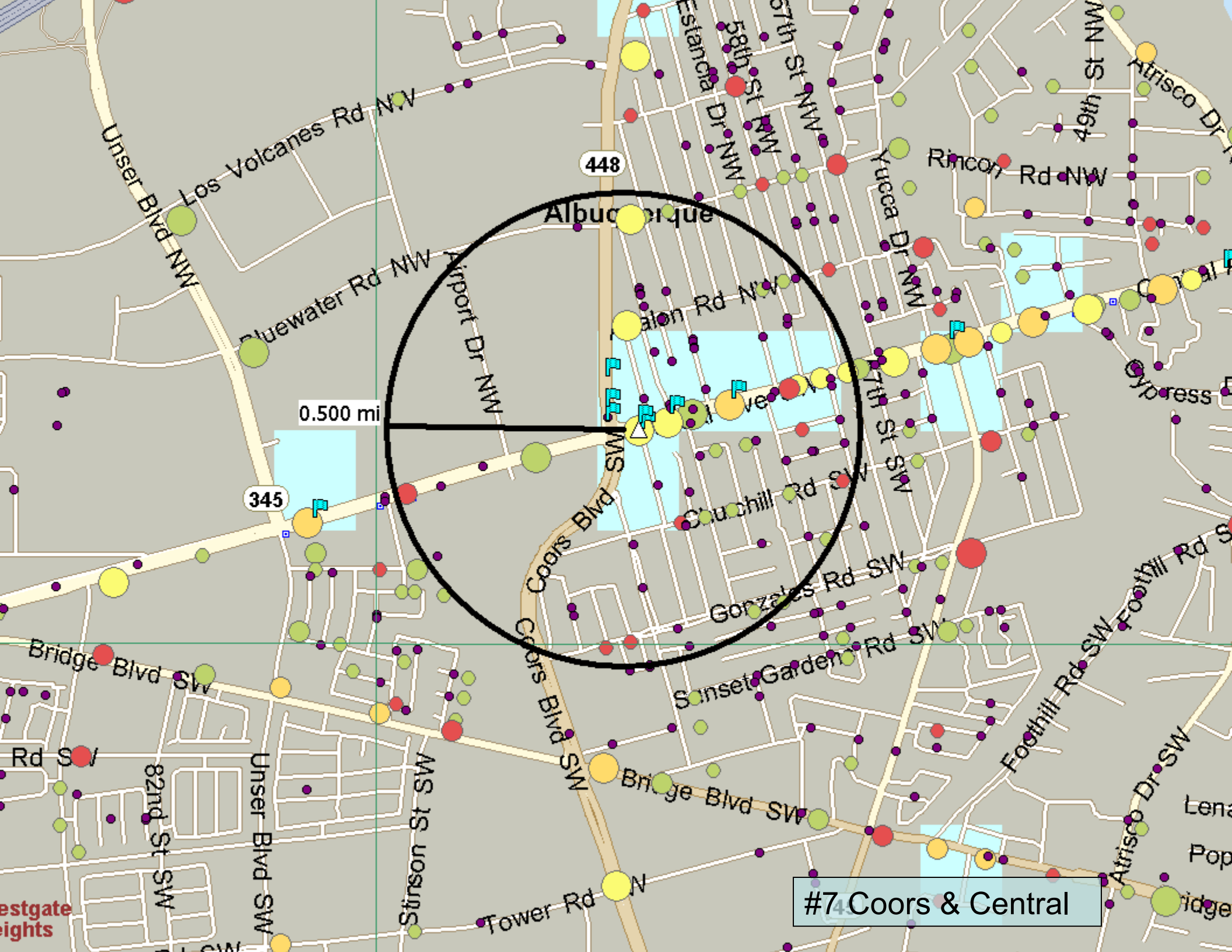


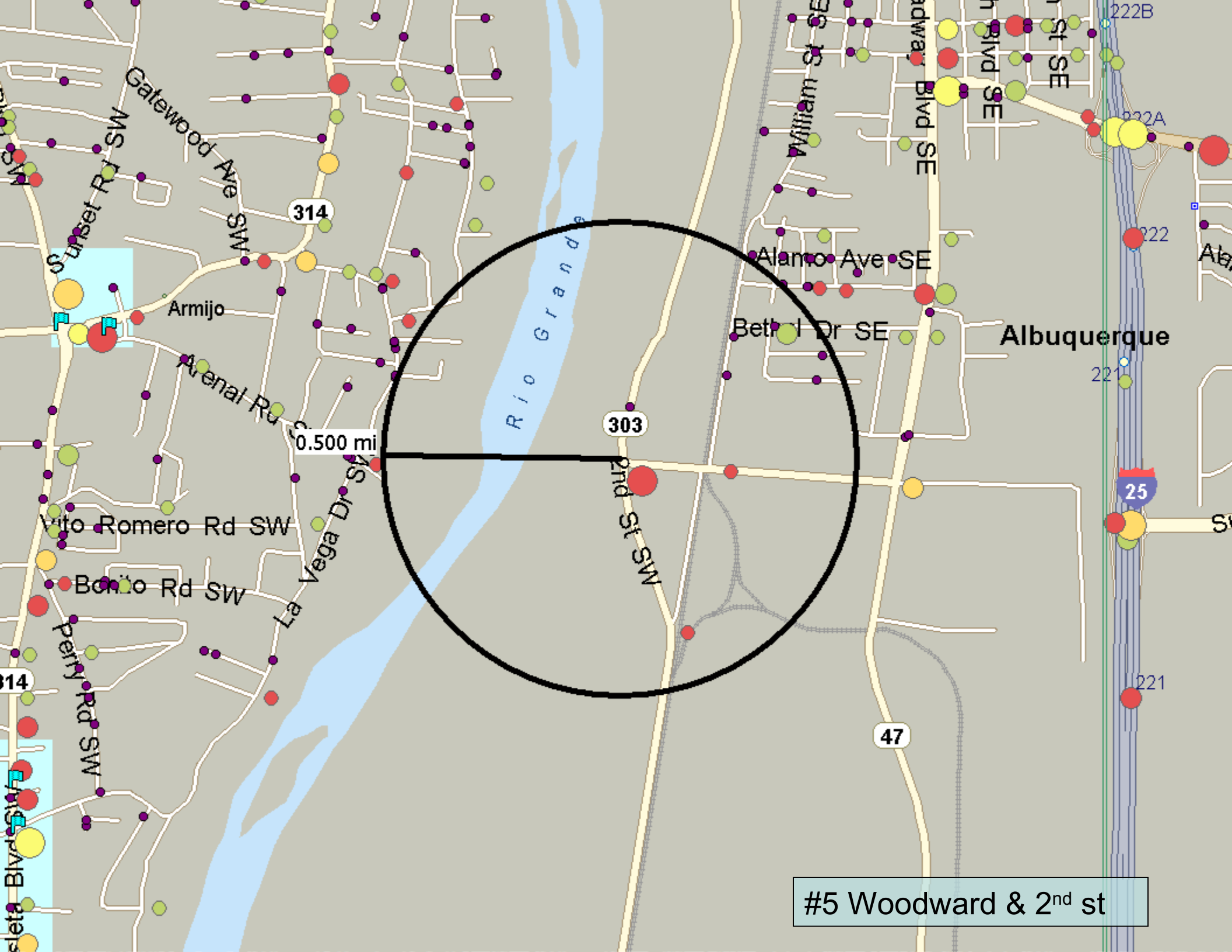
0.500 mi

Albuquerque

#5 I-40 & 6th st

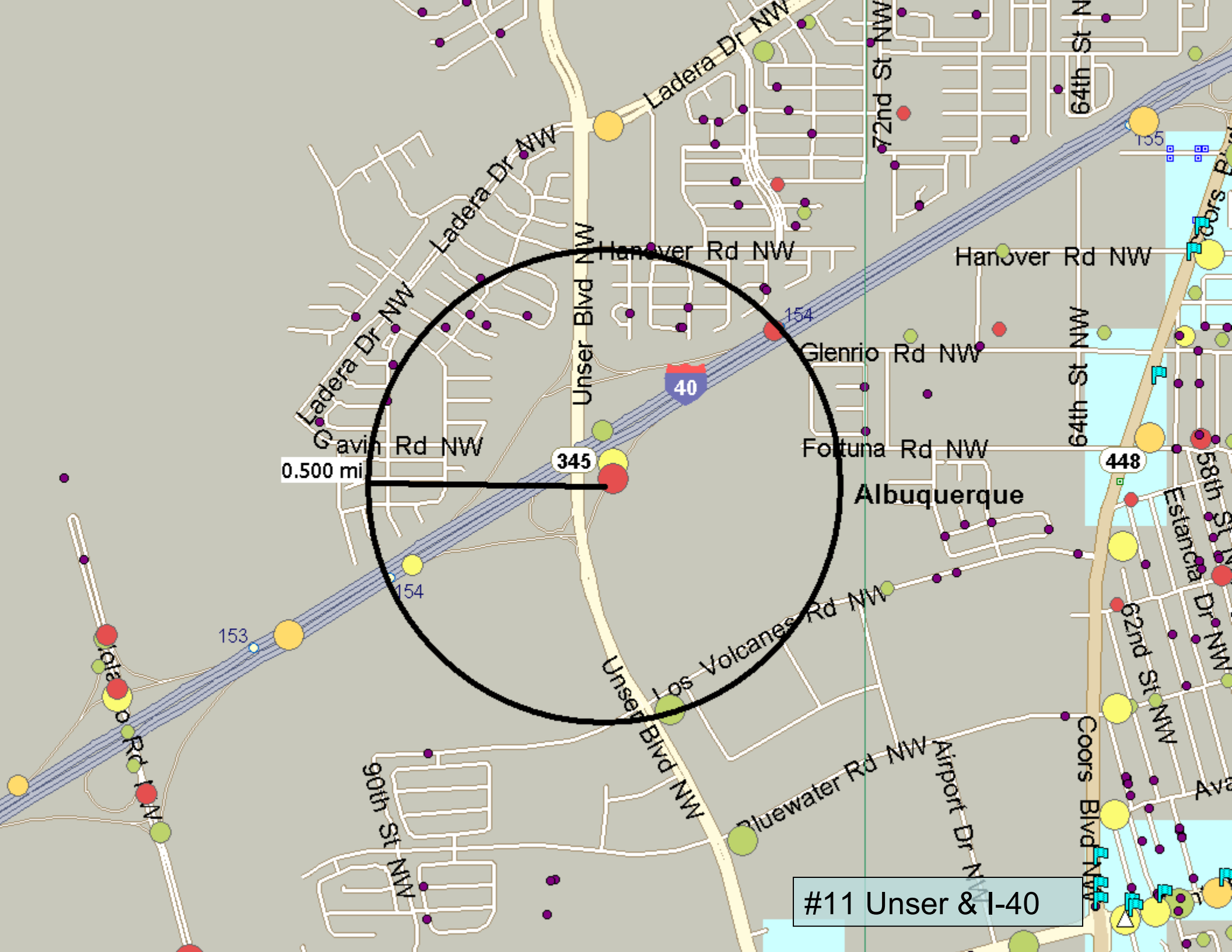






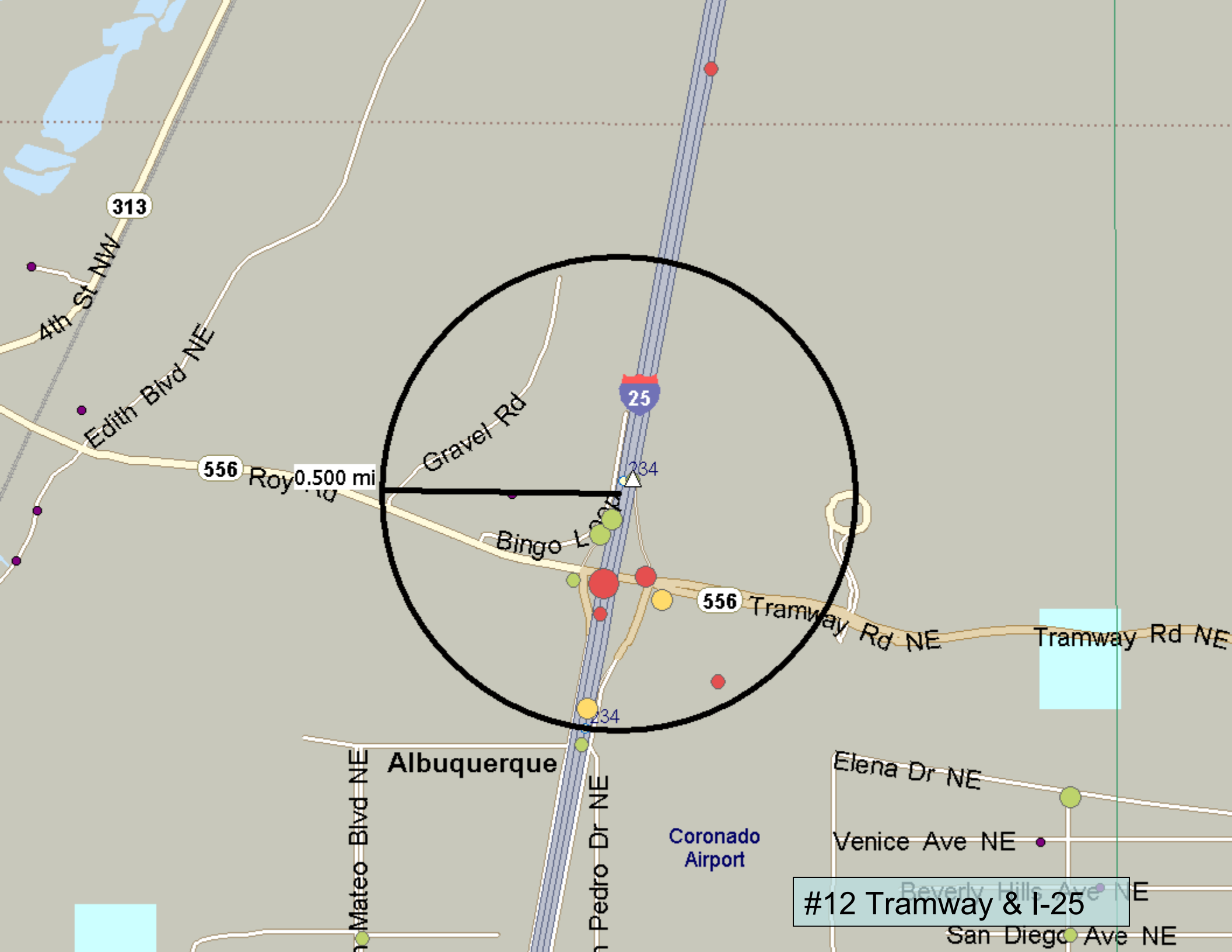
#5 Woodward & 2<sup>nd</sup> st



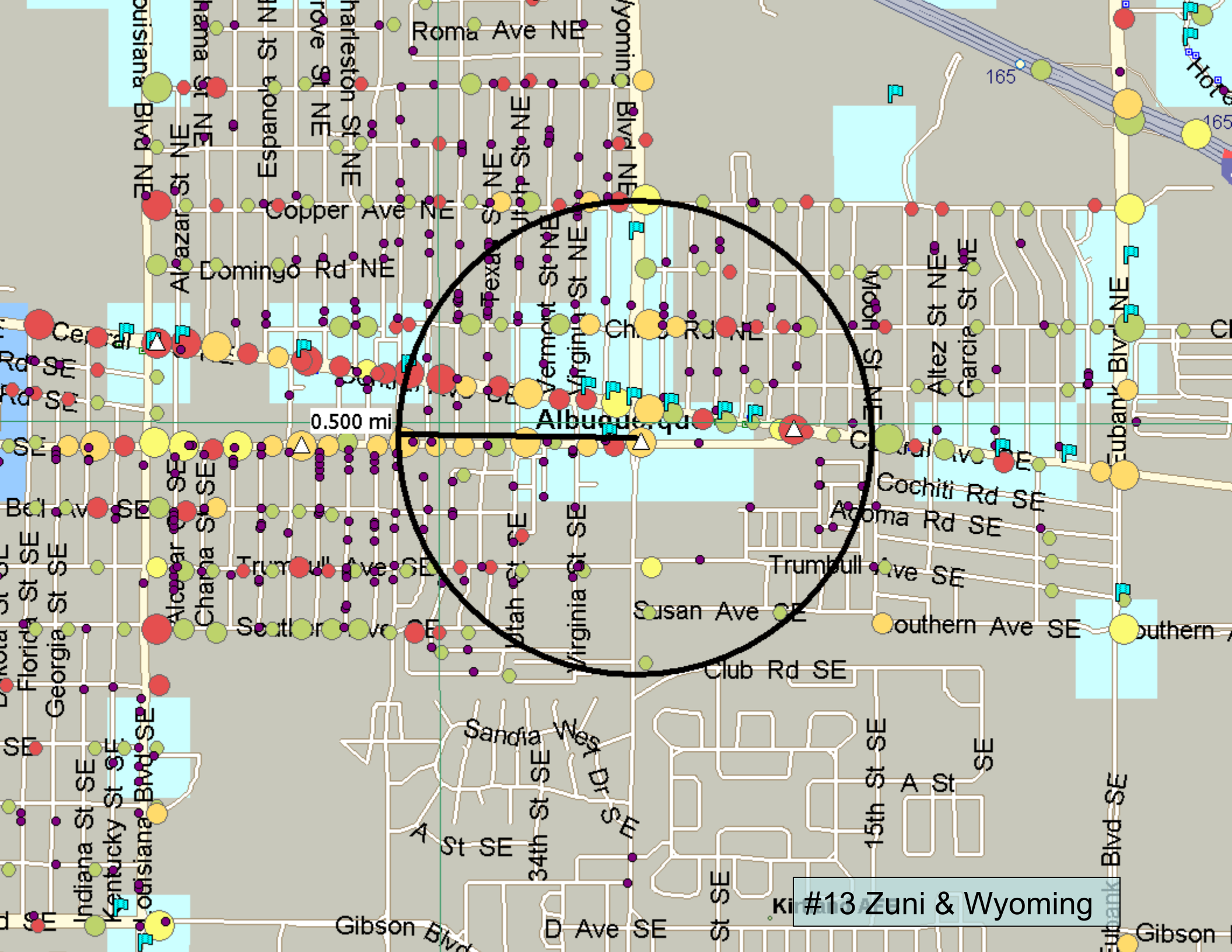


0.500 mi

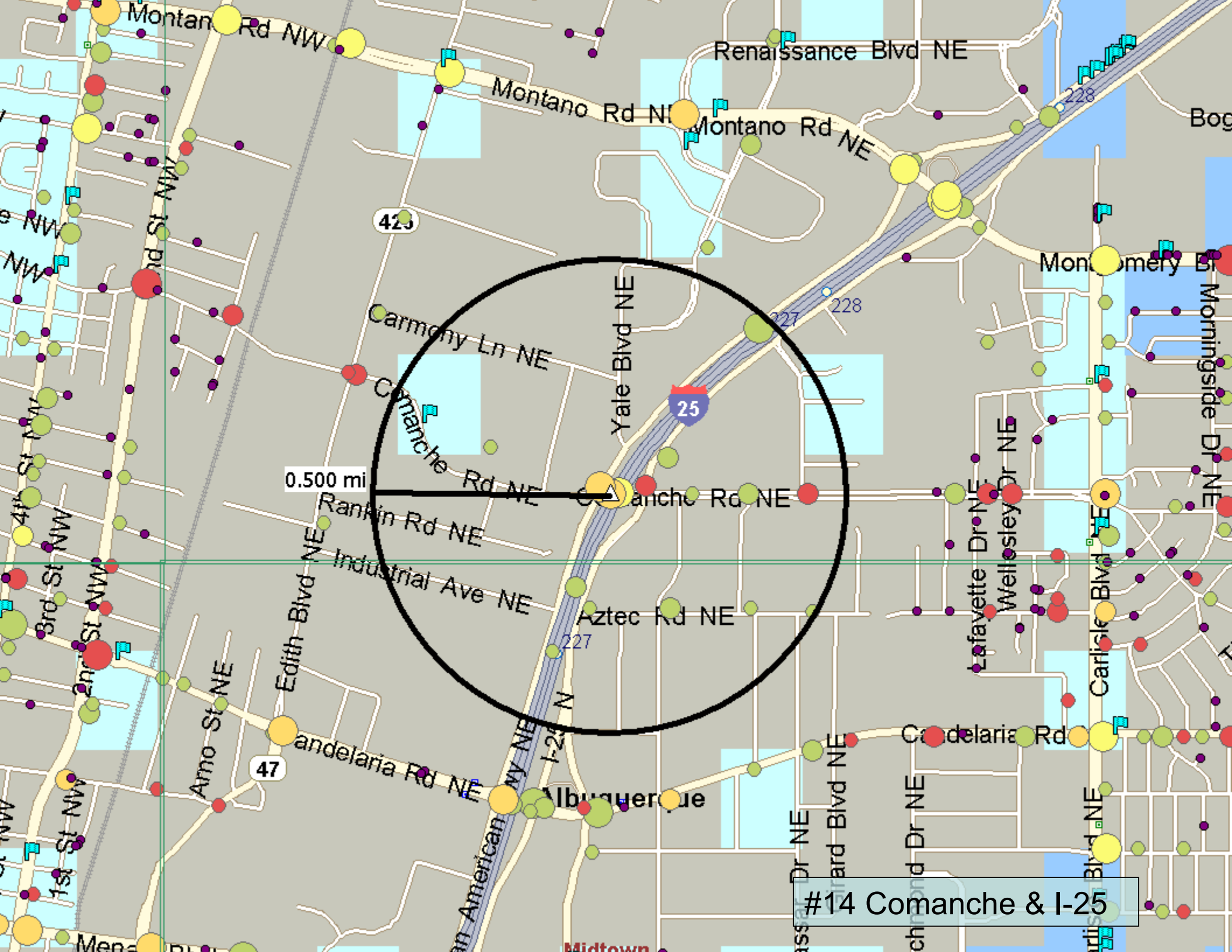
#11 Unser & I-40



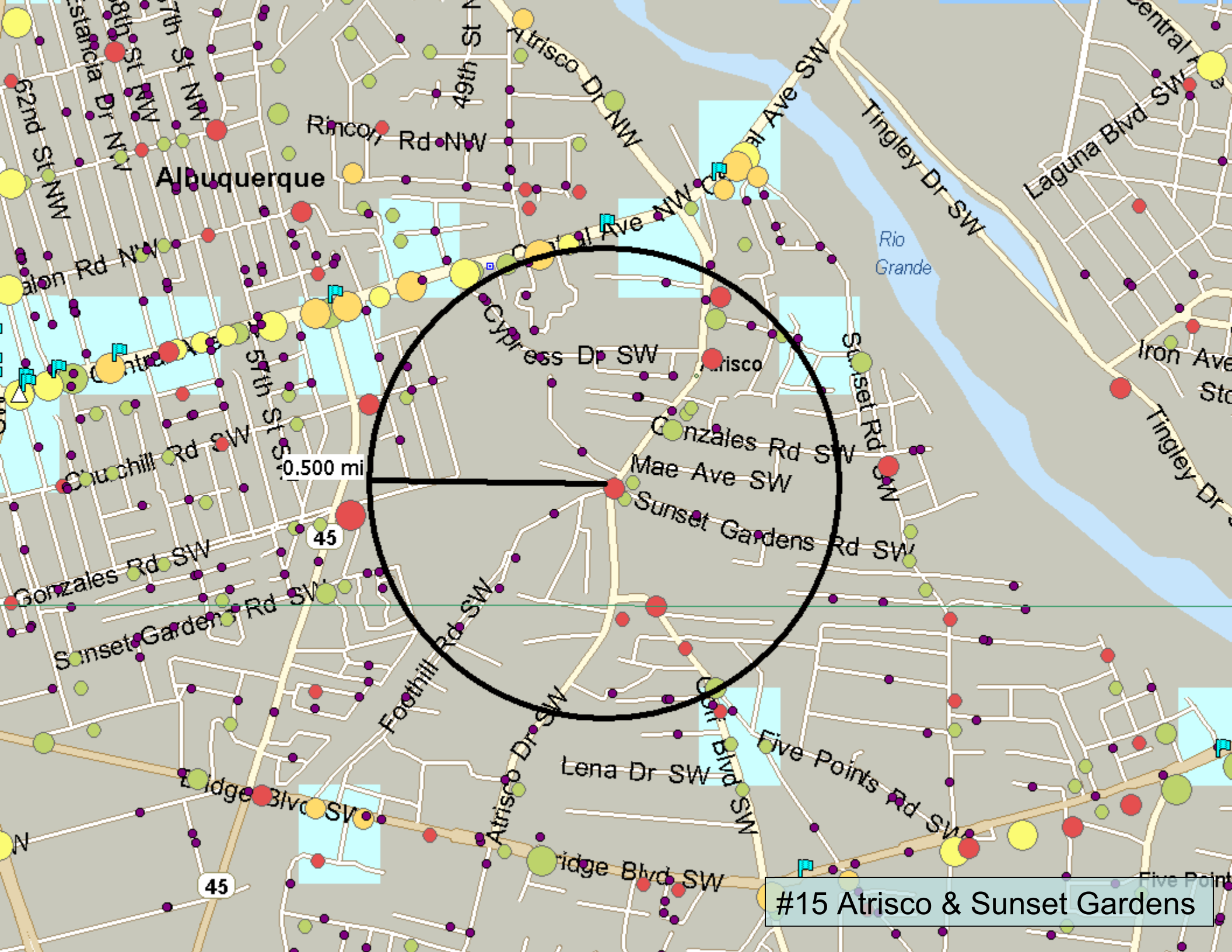
#12 Tramway & I-25



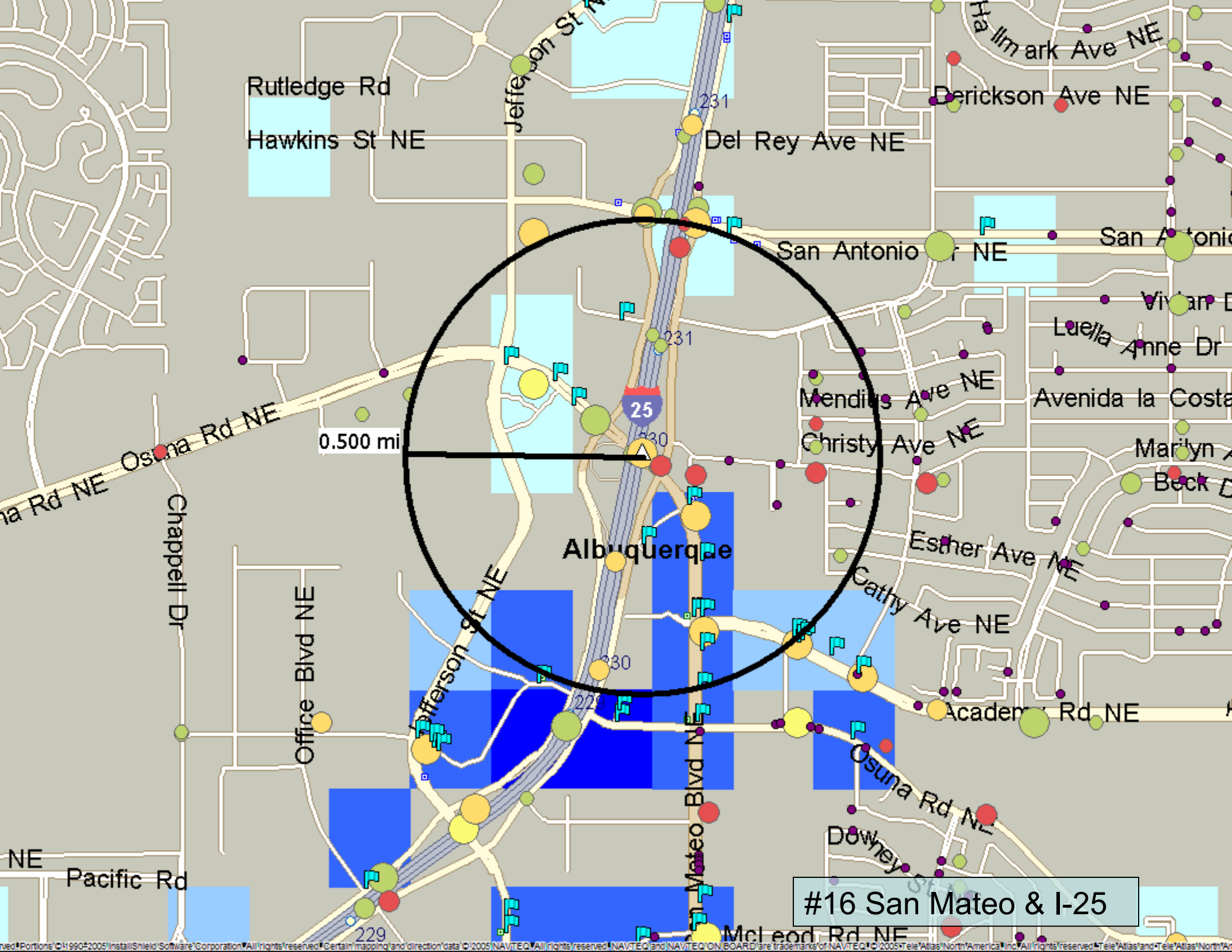
#13 Zuni & Wyoming



#14 Comanche & I-25



#15 Atrisco & Sunset Gardens



0.500 mi


Albuquerque

#16 San Mateo & I-25

# Crash Site Information Map

This map depicts crash site information at specific intersections during specific times of day. The information depicted is based on crash information from the CTS database of the Division of Government Research at UNM. Crashes from 1998 to 2005, during the hours of 7 p.m. to 5 a.m., Sun-Saturday were used. Four levels of coloring are used to describe increasing prevalence of alcohol related crashes among total crashes at specific intersections. Green circles represent crash sites where less than 7.5% of accidents were alcohol-involved. Yellow circles represent crash sites where between 7.5% and 16.4% of crashes were alcohol involved, orange circles represent crash sites where between 16.5% and 26.5% of crashes were alcohol involved and finally red circles represent, crash sites where 26.5% to 100% of accidents were alcohol involved. Please note that 5.31% of all accidents occurring during 1998-2005 were alcohol involved in Bernalillo County and 17.6% of all accidents in the same period between the hours of 7 p.m. to 5 a.m. were alcohol involved. The subset of accidents used on this map are 77% of total accidents occurring between 7 p.m. and before 5 a.m. The remaining 23% were not mapped because of either poor location data or low accident frequency. In addition, three sizes for the circles depicting crash sites are used. The smallest circle represents 1 accident over the period mentioned above, the medium circle equates to 2-8 accidents, and the largest circle represents from 9 to 228 accidents over this period.

 **DWI Arrestee Residence**  
 **Liquor Licensees**

	0-7.4% Alcohol Involved	7.5- 16.4% Alcohol Involved	16.5- 26.4% Alcohol Involved	26.5- 100% Alcohol Involved
1 Wreck				
2-8 Wrecks				
9-228 Wrecks				

## Liquor Establishments

The blocks below are centered at liquor licensee locations and represent concentrations of alcohol establishments in a surrounding square mile area.

-  **1-10 liquor licensees**
-  **11-20 liquor licensees**
-  **21-30 liquor licensees**
-  **31-40 liquor licensees**

# Non-Alcohol Involved Accidents

		Sun	Mon	Tue	Wed	Thu	Fri	Sat	All Week
Time of Day	12 am - 1 am	0.26%	0.19%	0.15%	0.18%	0.19%	0.20%	0.31%	1.47%
	1 am - 2 am	0.20%	0.08%	0.09%	0.09%	0.09%	0.11%	0.20%	0.86%
	2 am - 3 am	0.19%	0.06%	0.06%	0.08%	0.09%	0.10%	0.22%	0.79%
	3 am - 4 am	0.12%	0.05%	0.04%	0.06%	0.06%	0.05%	0.11%	0.48%
	4 am - 5 am	0.09%	0.05%	0.06%	0.06%	0.06%	0.06%	0.07%	0.44%
	5 am - 6 am	0.08%	0.07%	0.09%	0.10%	0.10%	0.09%	0.08%	0.61%
	6 am - 7 am	0.09%	0.29%	0.32%	0.31%	0.32%	0.28%	0.14%	1.74%
	7 am - 8 am	0.17%	1.07%	1.18%	1.19%	1.09%	0.98%	0.26%	5.94%
	8 am - 9 am	0.22%	0.94%	0.93%	0.98%	0.91%	0.84%	0.38%	5.19%
	9 am - 10 am	0.28%	0.65%	0.71%	0.63%	0.62%	0.64%	0.48%	4.01%
	10 am - 11 am	0.39%	0.70%	0.71%	0.69%	0.66%	0.77%	0.65%	4.57%
	11 am - 12 pm	0.43%	0.86%	0.93%	0.84%	0.86%	0.99%	0.85%	5.75%
	12 pm - 1 pm	0.64%	1.10%	1.10%	1.09%	1.17%	1.38%	1.05%	7.53%
	1 pm - 2 pm	0.65%	1.03%	1.09%	1.06%	1.04%	1.30%	1.05%	7.22%
	2 pm - 3 pm	0.61%	1.13%	1.15%	1.19%	1.11%	1.39%	0.96%	7.53%
	3 pm - 4 pm	0.65%	1.27%	1.37%	1.34%	1.36%	1.64%	0.91%	8.55%
	4 pm - 5 pm	0.67%	1.39%	1.49%	1.45%	1.43%	1.76%	0.81%	9.01%
	5 pm - 6 pm	0.64%	1.51%	1.70%	1.78%	1.69%	1.76%	0.85%	9.94%
	6 pm - 7 pm	0.51%	0.79%	0.90%	0.94%	0.89%	1.10%	0.68%	5.81%
	7 pm - 8 pm	0.43%	0.48%	0.53%	0.55%	0.50%	0.64%	0.51%	3.65%
8 pm - 9 pm	0.36%	0.31%	0.36%	0.35%	0.34%	0.44%	0.47%	2.63%	
9 pm - 10 pm	0.30%	0.29%	0.33%	0.34%	0.36%	0.49%	0.43%	2.54%	
10 pm - 11 pm	0.24%	0.21%	0.23%	0.25%	0.26%	0.47%	0.39%	2.04%	

There were 148,712 accidents in Bernalillo county in the period 1998-2005 that were classified as non – alcohol involved. As can be seen, from the table on the left, these accidents can be best understood as regular work hour related traffic incidents. The red hourly periods represent that 1/3 of the week that has the highest fraction of total accidents – 66%, the green hourly periods are that third with the lowest fraction of total accidents – 7%. The yellow middle third of the week accounts for 27% of total non alcohol involved accidents. The boxed numbers represent the highest accident rates for the morning and afternoon rush hour periods.

# Alcohol Involved Accidents

		Sun	Mon	Tue	Wed	Thu	Fri	Sat	All Week
Time of Day	12 am - 1 am	1.41%	0.86%	0.61%	0.74%	0.85%	1.02%	1.81%	7.31%
	1 am - 2 am	2.05%	0.52%	0.62%	0.77%	0.91%	1.10%	2.41%	8.38%
	2 am - 3 am	1.93%	0.25%	0.41%	0.65%	0.88%	1.04%	2.22%	7.37%
	3 am - 4 am	0.97%	0.11%	0.18%	0.29%	0.38%	0.41%	0.99%	3.33%
	4 am - 5 am	0.46%	0.11%	0.05%	0.20%	0.17%	0.22%	0.54%	1.74%
	5 am - 6 am	0.34%	0.08%	0.08%	0.12%	0.08%	0.12%	0.49%	1.32%
	6 am - 7 am	0.24%	0.11%	0.12%	0.12%	0.19%	0.14%	0.29%	1.21%
	7 am - 8 am	0.20%	0.12%	0.08%	0.22%	0.16%	0.12%	0.18%	1.08%
	8 am - 9 am	0.20%	0.20%	0.11%	0.19%	0.20%	0.11%	0.16%	1.17%
	9 am - 10 am	0.12%	0.08%	0.10%	0.18%	0.14%	0.17%	0.19%	0.98%
	10 am - 11 am	0.10%	0.22%	0.12%	0.20%	0.22%	0.16%	0.26%	1.27%
	11 am - 12 pm	0.17%	0.22%	0.22%	0.17%	0.16%	0.22%	0.35%	1.49%
	12 pm - 1 pm	0.16%	0.30%	0.28%	0.29%	0.29%	0.22%	0.29%	1.81%
	13 pm - 2 pm	0.22%	0.34%	0.36%	0.30%	0.38%	0.35%	0.64%	2.58%
	14 pm - 3 pm	0.35%	0.38%	0.35%	0.24%	0.49%	0.31%	0.54%	2.66%
	15 pm - 4 pm	0.54%	0.43%	0.35%	0.52%	0.43%	0.74%	0.67%	3.68%
	16 pm - 5 pm	0.43%	0.60%	0.44%	0.48%	0.58%	0.67%	0.77%	3.97%
	17 pm - 6 pm	0.77%	0.76%	0.91%	0.85%	0.76%	0.90%	0.98%	5.92%
	18 pm - 7 pm	1.11%	0.74%	0.82%	0.77%	0.86%	1.33%	1.27%	6.90%
	19 pm - 8 pm	1.04%	0.66%	0.56%	0.67%	0.67%	1.19%	1.03%	5.83%
	20 pm - 9 pm	0.96%	0.66%	0.73%	0.77%	0.89%	1.17%	1.32%	6.50%
	21 pm - 10 pm	0.97%	0.71%	1.13%	0.99%	0.73%	1.52%	1.51%	7.56%
	22 pm - 11 pm	1.09%	0.61%	0.78%	1.01%	1.10%	1.94%	1.75%	8.28%
	23 pm - 12 am	0.92%	0.70%	0.68%	0.80%	0.85%	1.82%	1.87%	7.65%
All Hours		16.75%	9.76%	10.08%	11.53%	12.37%	16.99%	22.52%	100.00%

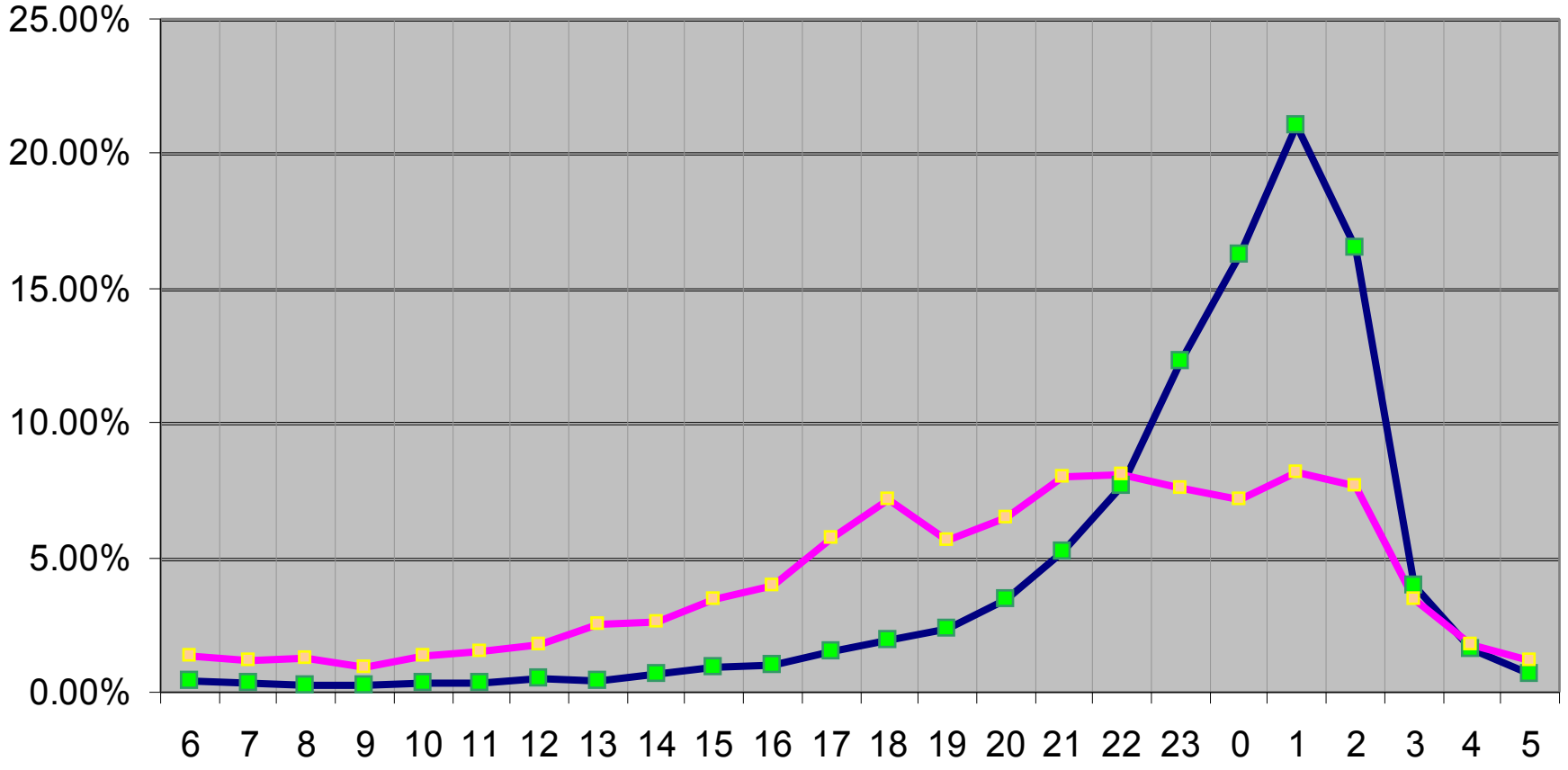
There were 8,342 accidents in Bernalillo county in the period 1998-2005 that were classified as alcohol involved. As can be seen, from the table on the left, these accidents can be best understood as occurring (although not exclusively) during late evening-early morning, weekend time periods. The red hourly periods represent that 1/3 of the week that has the highest fraction of total accidents – 65%, the green hourly periods are that third with the lowest fraction of total accidents – 9%. The yellow middle third of the week accounts for 26% of total alcohol involved accidents. The boxed numbers represent the 10 highest accident %'s for a typical week.

# Alcohol Accidents as % of total Accidents

		Sun	Mon	Tue	Wed	Thu	Fri	Sat	All week
Time of Day	12 am - 1 am	23.60%	20.34%	18.28%	19.08%	20.00%	22.61%	24.84%	21.81%
	1 am - 2 am	37.09%	27.04%	28.42%	31.68%	36.36%	34.98%	40.61%	35.45%
	2 am - 3 am	36.59%	20.39%	27.64%	30.68%	34.93%	36.55%	36.56%	34.26%
	3 am - 4 am	30.57%	11.69%	20.00%	22.43%	28.07%	29.57%	33.74%	27.83%
	4 am - 5 am	22.89%	11.25%	4.08%	17.00%	14.00%	17.82%	30.20%	18.26%
	5 am - 6 am	18.79%	5.98%	5.19%	6.10%	4.67%	7.09%	25.15%	10.79%
	6 am - 7 am	13.07%	2.02%	2.07%	2.14%	3.25%	2.84%	10.57%	3.75%
	7 am - 8 am	6.32%	0.63%	0.40%	1.01%	0.80%	0.68%	3.70%	1.01%
	8 am - 9 am	5.01%	1.20%	0.65%	1.09%	1.24%	0.72%	2.27%	1.25%
	9 am - 10 am	2.36%	0.71%	0.75%	1.58%	1.28%	1.45%	2.18%	1.36%
	10 am - 11 am	1.35%	1.70%	0.93%	1.64%	1.79%	1.12%	2.23%	1.53%
	11 am - 12 pm	2.16%	1.39%	1.29%	1.10%	1.01%	1.21%	2.24%	1.43%
	12 pm - 1 pm	1.34%	1.50%	1.39%	1.46%	1.37%	0.87%	1.51%	1.33%
	1 pm - 2 pm	1.84%	1.80%	1.82%	1.56%	2.02%	1.48%	3.28%	1.96%
	2 pm - 3 pm	3.10%	1.87%	1.67%	1.12%	2.42%	1.25%	3.05%	1.94%
	3 pm - 4 pm	4.43%	1.87%	1.40%	2.11%	1.75%	2.48%	3.97%	2.36%
	4 pm - 5 pm	3.47%	2.36%	1.64%	1.82%	2.21%	2.09%	5.04%	2.41%
	5 pm - 6 pm	6.28%	2.73%	2.91%	2.61%	2.44%	2.78%	6.12%	3.23%
	6 pm - 7 pm	10.95%	4.98%	4.84%	4.38%	5.16%	6.38%	9.49%	6.25%
	7 pm - 8 pm	11.92%	7.09%	5.62%	6.43%	7.04%	9.38%	10.21%	8.23%
	8 pm - 9 pm	13.14%	10.70%	10.32%	10.85%	12.71%	12.95%	13.61%	12.18%
	9 pm - 10 pm	15.40%	11.97%	16.10%	14.19%	10.22%	14.80%	16.34%	14.30%
	10 pm - 11 pm	20.59%	13.90%	15.89%	18.71%	19.33%	18.73%	20.25%	18.53%
	11 pm - 12 am	21.33%	19.27%	18.27%	18.36%	20.06%	19.34%	22.91%	20.19%
All Hours		10.07%	3.59%	3.48%	3.95%	4.32%	5.05%	9.38%	5.31%

This table best illustrates the prevalence of drunk drivers on the road by hourly period and day. The red third of hourly periods during the week, shows where the alcohol involved accidents are highest as a percentage of all wrecks from 1998-2005 in Bernalillo County for that hourly period. The green shaded areas show the lowest third of the typical week and yellow shows the middle third. The boxed numbers represent the 10 highest rates for this table – and not coincidentally the hour before and after bars stop serving alcohol.

### Bernalillo County % Alc-Rel Crashes & DWI Arrests by Hour, 2000-2005



■ DWI Arrest by Hour

■ Alc-Rel Crashes by Hour